

# TR COMFORTLINE II

## Height adjustable bathtub



### Specifications

Length	2080 mm / 82"
Width	780 mm / 31"
Lift speed	8 mm/s / 0.3 inch/s
Operating height range	650 - 1000 mm / 26" - 40"
Power supply	230 V, 50 Hz, 10A / 110V, 60 Hz
Overall weight (empty)	appr 100 KG / 220 lbs
Water volume	approx. 180 litres / 48 gallons



Registered at Medical Products Agency, Sweden, as a MD Class 1 product, MDD 93/42EEC.

## TR Comfortline II - The WELLNESS Bath

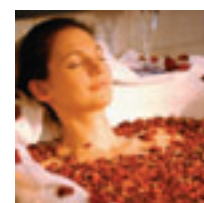
### FUNCTIONAL – PRACTICAL – EASY TO USE

The TR Comfortline II is a free standing, height adjustable bathtub designed for a satisfying and relaxed bathing experience. Used in conjunction with the TR9650 CombiLift, the Comfortline is easily accessible from either side or the head end of the bathtub. Attendants will benefit from the Comfortline's ergonomic design and efficient bathing cycle. Simple installation of the Comfortline allows it to be positioned in almost any central bathing areas or bathrooms.

Controls have been designed with simplicity in mind and the smooth design makes it easy to clean and maintain.

### MORE THAN JUST BATHING – the Comfortline II provides superior bathing experiences

The pleasingly simple design provides a more traditional visual approach to bathing, yet it is available with options that can offer the user a soothing bathing experiences.



**ADJUSTABLE AIR SPA** – Air bubbles from twelve integrated jets stimulate blood circulation and provide calming environment for relaxation

**LED COLOUR LIGHT SYSTEM** – The Comfortline's underwater lighting system can be adjusted to project different wavelengths of colour providing a soothing effect that creates a pleasant bathing experience.

**MUSIC SOUND WAVE SYSTEM** – Integrated MP3 player with smart card module and eight speakers provide a relaxing musical mood enhancing environment for the bather. MP3 files can be uploaded to the Comfortline, whether it is therapeutic music, relaxing sounds from nature or a bather's favorite piece.



### TR EQUIPMENT

*Hygiene Equipment Designed for People*

TR EQUIPMENT AB PO Box 116, S-573 22, TRANÅS, SWEDEN  
 TR GROUP INC. 903 WEDEL LANE, GLENVIEW, ILLINOIS 60025, USA  
 TR EQUIPMENT UK LTD. INNOVATION CENTRE, GALLOWS HILL; WARWICK, CV34 6UW, UNITED KINGDOM  
 TRANSPORHAMED GmbH GARTENSTRASSE 9, 427 99 LEICHLINGEN, GERMANY

Phone: +46 140-38 50 60 Fax: +46 140-38 50 61  
 Phone: +1-800-752-6900 Fax: +1-847-724-8566 [www.trequipment.com](http://www.trequipment.com)  
 Phone: +44 844 335 8386 Fax: +44 844 335 8383  
 Phone: +49 2175-169422-0 Fax: +49 2175 -1694-19



# TR COMFORTLINE II

## Height adjustable bathtub

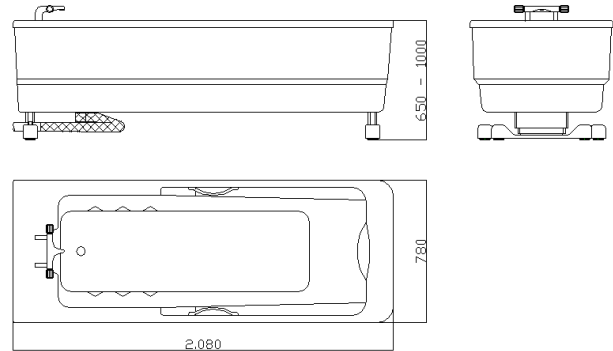


### Features

- Innovative and attractive design
- Easy to operate and learn - Quick introduction
- Easy access to the bathtub from three sides
- Compact design for easy placement
- Ergonomic tub shape
- Easy to clean and maintain
- Suitable for mobile transfers (TR 9650 with Stretcher/Chair is recommended.)
- Detached, no wall or floor fixing

### Standard Equipment

- Actuators for height adjustment to infinite positions
- Thermostatic mixer with temperature limit
- Hand shower with long hose
- Overflow control and pop-up drainage incl drainage hose
- High quality bathtub with side covers of reinforced fibre glass
- White as standard colour
- Two chrome grab handles
- Foot support, adjustable in three positions and removable
- Reinforced hoses for water installation
- Two wide stainless steel legs with adjustable feet



Integrated with the TR 9560 Mobile patient combilift the system provides a safe moving and handling for both patient and attendant. During the bathing cycle the patient never leaves the comfort and security of the chair or stretcher.



Bathtub and bathtub side covers can be delivered in optional RAL - Colour

### Options/Accessories available for Comfortline II:

- Cleaning/disinfection system
- Autofill with 2 different pre-set levels
- Bathtub and bathtub side covers in optional RAL - Colour (Specify RAL code on order)
- Fixed height bath - ECOLINE

### Wellness Options

- AIR SPA system with integrated jets at the bottom of the tub.
- LED Color Light System with light that changes the water into different colours.
- Music, sound wave system - An integrated MP3 player with a smart card module and eight speakers.

TR reserves the right to make design changes and/or improvements without notice

Distributor:

### TR EQUIPMENT

TR EQUIPMENT AB  
TR GROUP INC.  
TR EQUIPMENT UK LTD.  
TRANSPORHAMED GmbH

PO Box 116, S-573 22, TRANÅS, SWEDEN  
903 WEDEL LANE, GLENVIEW, ILLINOIS 60025, USA  
INNOVATION CENTRE, GALLOWES HILL; WARWICK, CV34 6UW, UNITED KINGDOM  
GARTENSTRASSE 9, 427 99 LEICHLINGEN, GERMANY

Phone: +46 140-38 50 60 Fax: +46 140-38 50 61  
Phone: +1-800-752-6900 Fax: +1-847-724-8566  
Phone: +44 844 335 8386 Fax: +44 844 335 8383  
Phone: +49 2175-169422-0 Fax: +49 2175 -1694-19

Hygiene Equipment Designed for People

